



BURSA
BÜYÜKŞEHİR
BELEDİYESİ

BURSA

Healthy Cities Projects

NALAN FİDAN

Head of Department

Project Coordinator of Healthy Cities

october 2021

BURSA
İÇİN CANLA
BAŞLA

Project Information included in the Health Development Plan



| Institution Name | Number of Projects |
|--|--------------------|
| BMM | 121 |
| General Directorate of BUSKİ | 26 |
| Bursa Provincial Directorate of Health | 32 |
| <u>AFFILIATES</u> | <u>2</u> |
| General Total | 181 |

Project Costs Table by Area

| Main Fields | Total Cost |
|----------------------|-----------------------|
| HEALTH | ₺1.178.762.978 |
| SOCIOECONOMIC STATUS | ₺229.760.365 |
| URBAN INFRASTRUCTURE | ₺3.632.747.966 |
| ENVIRONMENT | ₺1.432.654.532 |
| DISADVANTAGED GROUPS | ₺133.522.192 |
| GOVERNANCE | ₺59.460.400 |
| General Total | ₺6.666.908.433 |

URBAN INFRASTRUCTURE

Public



Emek –High-speed Train – (City Hospital) Metro

IN PROGRESS



Explanation

Emek - City Hospital Rail System Line, which is designed to provide uninterrupted transportation to Bursa City Hospital, which draws the burden of health services of Bursa, with a total bed capacity of 1,355 in 6 different hospitals, will be 6.1 kilometers long and 4 stations. The tender has been made, the implementation is in progress.

University – Görükle Metro Line

BEING
PLANNED



Explanation

Within the scope of the Transportation Master Plan studies, preliminary road location project examination is carried out for the Görükle Extension Line, which is planned to be built in order to extend BursaRay, which ends with the University Station, to Görükle, which is a densely populated area of students and other citizens in recent years, and to transport our residents to Uludağ University and the university hospital. 3 stations are planned to be constructed.

Kent Meydanı-Bus Terminal Tramline

IN PROGRESS

Explanation

The integration of the 11-stationed T2 line with a total length of 9,445 meters into the T1 line is being carried out in 3 stages. With the integration of the two lines, citizens who take the tram from the Terminal will have the opportunity to go up to the Heykel without interruption.



70 Smart Intersections Application

COMPLETED

Explanation

In order to quickly solve the traffic problems that occur at the intersection points, a design project was prepared at 70 At-Grade junctions and the intersection capacity was increased. Construction has been completed at 50 at-grade junctions, and project work is in progress at 20 intersections.



Cycling Roads

IN PROGRESS



Explanation

In line with the data obtained from the transportation master plan, the project and implementation studies continue.

The project and implementation of the 50 km route is underway.



Acemler Bicycle Crossing Bridge

IN PROGRESS



Explanation

It is planned to provide uninterrupted bicycle transportation to all regions by providing the North-South connection of the city via the D200 Highway in the Acemler region, which is one of the largest Connection Centers of the city.

Açıklama



The project, which allows the citizens who come to a certain place with their vehicles to be able to leave their vehicles in the "park your car and take a public vehicle" car parks and go anywhere they want by subway, provides positive contributions to the city, the residents and the environment. Drivers who use 'park your car and take a public vehicle' prevent traffic jams, have a cleaner environment as they reduce the emission of harmful gases in addition to paying less fuel costs.

Electric Vehicle Charging Stations

IN PROGRESS



Explanation

Bursa Metropolitan Municipality, which has accelerated the infrastructure works for electric vehicle charging stations in Bursa, which will host Turkey's first domestic, national and electric car, started to provide service by installing charging units in BURULAŞ parking lots.

Khans Region Çarşıbaşı Urban Design Project (Unesco Region)

IN PROGRESS

Explanation



Within the scope of the Project which aims to extend the area of Historical Bazaar and Khans Region, which started to be formed in the 14th century in Bursa, the first capital of the Ottoman Empire, and completed its development in the 16th century with the formation of khans, covered bazaars and bazaars, After the destruction of the buildings surrounding the historical area namely buildings of İşkur, Kızılay, Central Bank, 15 shops around the tomb of Esir Dede and a building at the back of the Pirinç Han, the demolition of 4 buildings at the back of the Pirinç Han was also completed.

While the expropriation studies were continuing, the competition held to determine the project to be implemented to the region after the demolitions was completed.

Çekirge Terrace Project

IN PROGRESS



Explanation

The abandoned building behind the Çelik Palas Hotel will be demolished and leisure centres such as the National Library, Observation Terrace, Swimming Pool and Sports Facility will be built.



Yigitler-Esenevler-75. Yıl Urban Transformation

IN PROGRESS



Explanation

Within the scope of the project studies carried out with the aim of identifying areas with disaster risk, urban sprawl, critical density, and creating qualified, healthy and livable environments through planning and preparing the application program, the area of 6,19 hectares in the neighbourhoods of Yiğitler – Esenevler – 75. Yıl of Yıldırım District, has been declared as Urban Transformation and Development Project Area.

Istanbul Road Urban Transformation Project

IN PROGRESS

Explanation

Work continues on the project, which will be implemented on an area of 11 thousand 269 square meters, which will turn Istanbul Street into a real showcase. There will be 193 residences, 118 offices and 30 shops in the project, which was prepared by considering an exemplary mixed-use principle. 26 of the residences were designed as 1+1, 76 of them as 2+1 and 91 of them as 3+1.

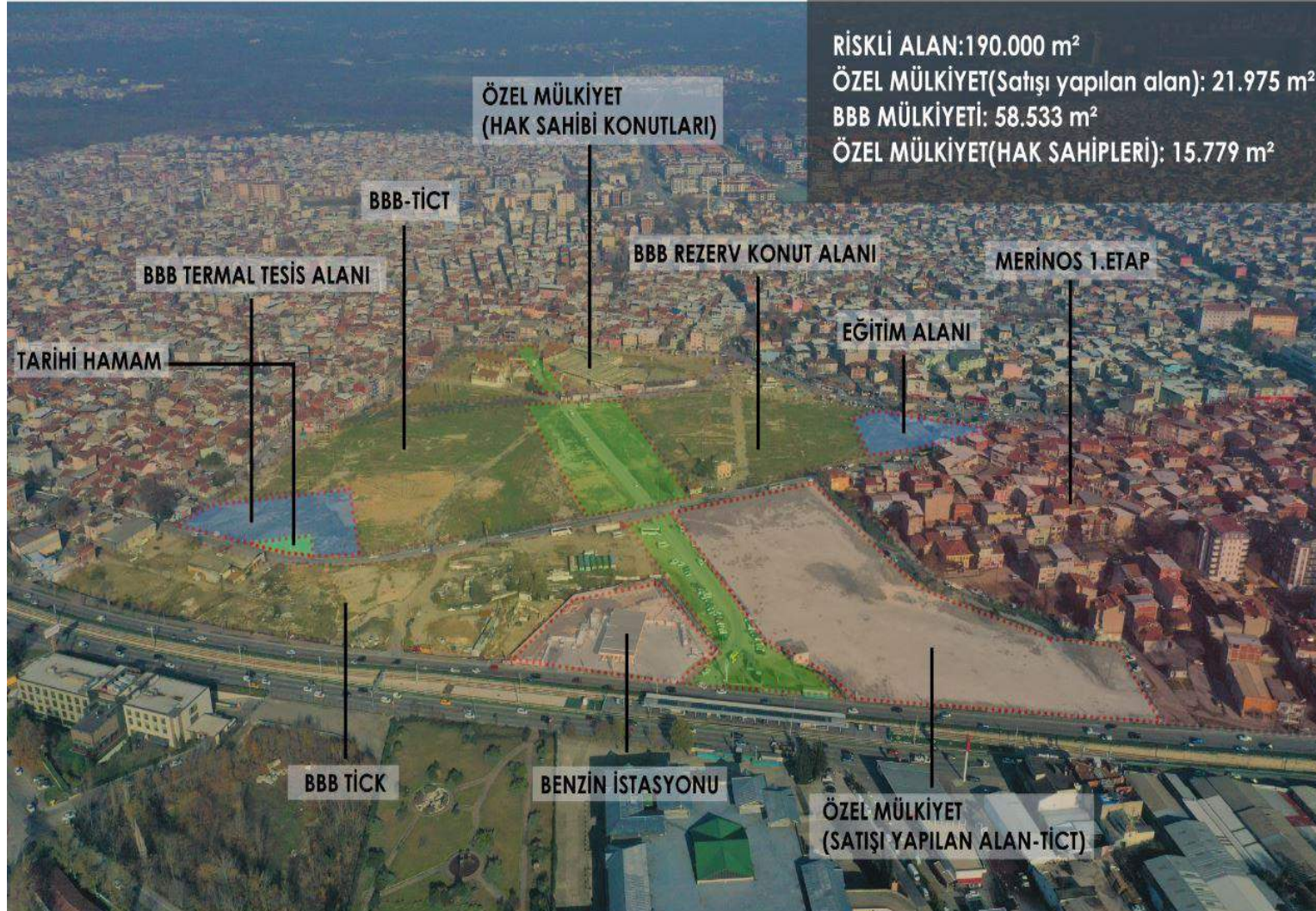


Sıcaksu Urban Transformation and Development Area

IN PROGRESS

Explanation

It is aimed that the project area will become a new life center that will add great value and prestige to Bursa at a point that can be called the heart of the city with its thermal water potential. Project design studies have been started in order to provide our city with a new commercial, residential and thermal tourism area in the region and to use it as a reserve area for the Merinos Stage. Studies are carried out jointly with the Ministry of Environment and Urbanization.



1050 Konutlar (Residential Area) Urban Transformation Project

PLANLANAN

Explanation

With the planned project, it is aimed that the area would be prepared for earthquake risks, and unqualified environment/living areas would be turned into a qualified, healthy, livable and sustainable city part by demolishing the existing structures that have completed their physical and economic life and pose a great risk in terms of life and property safety in a possible earthquake.

Project and implementation studies are carried out jointly with the Ministry of Environment and Urbanization.



New Marina in Mudanya

BEING
PLANNED

- Denizde 317, karada 150 yat kapasitesi
- İdari bina
- Kontrol kulesi
- Kafe, restoran ve ajans ofisleri
- Yat kulübü
- Çekme yeri
- Halka açık yeşil alanlar
- Meydanlar
- Depo
- W.C., duş ve soyunma odası
- Açık ve kapalı otoparklar
- Yat sahipleri özel alan
- Revir



Açıklama

Construction Plans for Mudanya District Güzelyalı Yacht Harbor and fishing ports continue. Negotiations with the relevant institutions are maintained, and after the positive opinions are received, the construction works will start after the approval of the zoning plan.

Cinarcik Dam Transmission Line

BEING
PLANNED



Explanation

With the project, the city's water needs will be met until 2050. 145 million m³ of water will be supplied to Bursa.

It will be put into service in 2023.

With the project, water will be supplied to Karacabey, Görükle, Hasanağa, Kayapa, Nilüfer and industrial zones located west of Bursa, Hasanağa, Akçalar, Başköy and Gölyazı.

HEPP and GEPP Power Plant Projects

IN PROGRESS



Explanation

There is a total installed power of 3010 KW in 3 HEPPs and 4 GEPPs Power Plants whose construction have been completed.

Approximately 9145 KW Power generation is expected from 5 HEPPs and 3 GEPPs power plants planned to be built.



Social Responsibility

Public



Bursa Neighborhood Volunteers Movement

CONTINUING

Explanation

- Social Aid Package Supply Distribution
- Stray Animals Feeding
- YKS Question Bank Distribution (17 Districts)
- Drought Fighting Training
- Red Crescent Blood Donation
- Drought Fighting and Water Awareness activities
- Feeding Birds
- School Painting
- Earthquake Fighting and Disaster Management Activities
- 8 March International Women's Day Event
- world Water Day
- A Visit of Honor to Our Seniors Over 65
- AFAD Online Disaster Awareness Training
- World Lawyers Day
- Mosque Cleaning Event
- Iftar Supply Distribution Event

Number of Volunteers

2 Thousand People



Nursery Project

CONTINUING



Explanation

Within the scope of the Nursery Project, 16 Child Education Centers providing pre-school education were opened.

centers; Hamitler, Demetevler, Arabayatağı, Beyazıt, Yeşilyayla, Vakıf, Gürsu, Vatan, Orhangazi, Alacahirka Yenisehir, Gemlik Cinaronu, Molla Fenari, Karacabey, Mudanya

Planned Nursery Project child education centers ;
Mustafakemalpasa nursery children's center

Number of Beneficiaries
2 Thousand People

Youth Camps

CONTINUING



Explanation

Summer camps, which allow young people to spend time with nature and sports, are held for 6 days for young people between the ages of 11 and 13. Gemlik Karacaali Sea Camp was planned as a total of 20 terms, 4 boys and 6 girls camps. Within 2 years, the participants benefited from basic disaster training, orienteering, archery, canoe training, swimming, live foosball, badminton, cycling, open air cinema, bocce, basketball, music, darts, table tennis, barbecue, chess, beach volleyball and beach football. .

Barrier-free Beach

CONTINUING



Explanation

'Disabled Friendly Beach Project' is put into service on Kumsaz and Mudanya-Guzelyali beaches.

Regulations have been implemented to make our beaches suitable for the use of our disabled citizens.

Card 16 Project

CONTINUING



Explanation

With the application, which was started to meet the basic needs of citizens living in Bursa and in need of help, 'without offending', 8 thousand 290 people have had the opportunity to meet their needs easily by using Kart16 from the markets they want.

Assistance is provided for 4 or 12 months, in the amount of 150, 200, 250 TL.

Cost: 17,376,329 ₺

Number of Beneficiaries

9Thousand

Monetary Aids for Rural Development

CONTINUING



Explanation

Within the scope of rural development support projects, 1.5 million seedlings and saplings are distributed to the producers every year.

As of 2021, in addition to blueberry and raspberry cultivation projects, aronia, blackberry, gojiberry, strawberry and lavender cultivation projects started to be implemented.



Fidan Sayısı
7,5 Milyon

HEALTHY LIVING



SHARED BICYCLE SYSTEM

IN OPERATION



Explanation

The shared bicycle system, which has bicycle parking areas at 7 different points in 3 regions, Mudanya, Gölyazı and CumhuriyetStreet, with a capacity of 10 in each parking area, has been put into service as a result of the studies carried out together with the Department of Transportation. It is aimed to reduce the use of individual vehicles and to expand public transportation by providing the integration of public transportation with the shared bicycle system. To this end; There are also stops at the Şehreküstü Metro Stop, BUDO pier and Gölyazı Burbak parking lot.

New Atatürk Indoor Sports Hall and Youth Sports Center Project

BEING
PLANNED

Explanation

The competition, which was organized to determine the new state of Atatürk Indoor Sports Hall, whose demolition works were completed next to the National Garden, has concluded. Implementation project work continues.

It is located in Kükürtlü Neighborhood of Osmangazi District, on plot 3907 Block3. The land area of the project is 68,368 m2, the total construction area is 17,309 m2 and it consists of basement + 3 floors. Inside the indoor sports hall, there will be a swimming pool, basketball hall, BMM Youth and Sports Department. Preliminary Projects have been delivered to us and the implementation project phase has been started.



Inegol Mahmudiye Semi-Olympic Swimming Pool

COMPLETED



Explanation

It consists of a 25x12.5m semi-olympic swimming pool on a floor area of 1450 m2, a parking area for 38 vehicles, a multi-purpose hall, a management room, changing rooms, showers and WCs, a coach room, a kitchen, a plumbing unit, a boiler room, a machine room and a warehouse. .

Mustafakemalpaşa Youth Center Social Life and Sports Facilities

IN PROGRESS

Explanation

The second phase of the project, which was founded in 1991 in Mustafakemalpaşa district and will turn the area where the swimming pool is located, into the center of social, cultural, artistic and sportive activities, continues. When the project is completed, it will make a privileged place where women, children and young people can hold artistic and cultural activities, and serious organizations with its movie theaters, meeting and conference halls.



Bursa Metropolitan Municipality İnegöl SportsCentre

IN OPERATION

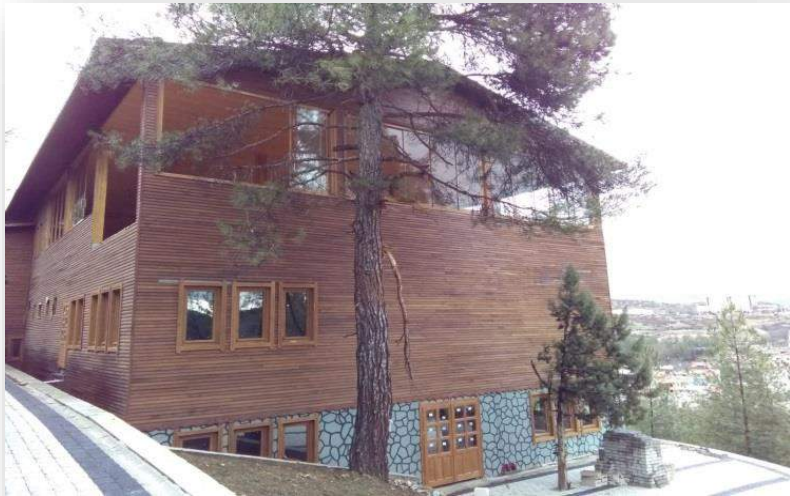


Explanation

İnegöl Sports Center has a total of 8.379 m² closed area, with A, B, C Blocks and Tribune sections, built on an area of 37.39 decares. Block A (Social Facility), Block B (Infrastructure Sportsman's Building) Block C (Changing Building). There are 2 68X105 m Natural Grass Fields, 1 25X50 m Synthetic Grass Field, a parking lot for 35 vehicles, 4 of which are for the handicapped, and an open tribune for 600 people.

Harmancik Eco Tourism Facilities

COMPLETED



Explanation

Social Facility Areas

- A handicapped bungalow 52 m2
 - A single storey bungalow 52 m2
 - A duplex bungalow
 - 1000 m2 conference hall building
- ### Landscaping
- The wooden bridge connecting the old restaurant building and the new conference building
 - Male and female toilet for common use
 - Laundry building for facility use

Youth and Sports Activities

SERVICEABLE

Explanation



Youth Camps

Annually, 3,000 young people benefit from Gemlik Karacali Sea Camp and Kestel Alaçam Scouting Camp.

Soup Fountain

Daily soup was served to 2,000 students at 3 locations in 2 universities. It was suspended due to the pandemic.



Zumba and Pilates for Women

It serves 2,000 trainees aged 16 and over.

Vlogger Encounters

It was organized for the first time institutionally in Turkey. The first meeting took place with the participation of 2 thousand people. The work continues as Vloggerl Academy.

Home Care Services

SERVICEABLE



Explanation

Physician, nurse visits, care support visits (bath and personal care; nail, hair-beard cutting)

Psychological support visits, Physical Therapy and Rehabilitation Specialist Visits, Physiotherapist visits,

Cleaning service for the homes of lonely patients who cannot clean the place they live in.

Number of Beneficiaries

35Thousand

INCREASE OF THE GREEN AREAS



Green Field, Park and Beach Arrangements

COMPLETED



Explanation

As of 2017, approximately 451 acres of parks and green fields have been added to the city. 1294 Decares of Park and Green Field Construction and Project is Continuing.

In addition, Coastline Design and Landscaping work has been carried out on the 10.5 km coastline, and Planning for the 5km Beach continues.

Vakıfköy Bera City Park and Sports Facilities

COMPLETED



Explanation

The City Park and Sports Facilities project, which includes a swimming pool, boxing and wrestling halls, sportsman's guesthouse, two regular football fields, spectator stands, amusement park, cafeterias, an 11 thousand square meter pond, theme parks and a parking lot for 300 vehicles, has been completed.

Cost of project
82 Million ₺

Bursa National Garden

COMPLETED



Explanation

A joint project with the Ministry of Environment and Urbanization was carried out at the site of the old stadium.

German Canal 2nd Stage Landscaping

COMPLETED

Explanation

In the German Canal Landscaping, walking and cycling paths and planting work have been completed and put into service.



Iznik Historical Coastline Recreation and Landscaping

COMPLETED



Explanation

Along the 3,5 km coastline, in an area of 135 thousand m², 3 WCs, 1 Masjid, pedestrian path, bicycle path, jogging track, vehicle road, children's playgrounds, landscaping, vehicle road, walking path lighting, medium voltage displacement and upper construction work has been done.

Of the 135 thousand m² area to be arranged, 37% is allocated for green space, 34% for the Coast-Beach natural area, and 29% for the road and square.

Karacabey-Yeniköy Coastal Line Urban Design and Landscaping

COMPLETED



Explanation

Karacabey-Yeniköy coastal line urban design and landscaping construction work was carried out on an area of 400,000 m², along the 2.0 km coastline. Within the project; 4 WCs-Shower-Undressing cabins, Daily Accommodation facility with 20 rooms, 6 kiosks, pedestrian paths, 2000 m coastal walking path, 2000 m bicycle path, exhibition areas, squares, parking lots, storm water, sewerage, drinking water, green area irrigation Infrastructure works related to the system, 17 projectors, 160 decorative lighting poles and landscaping arrangements were made.

Urban Design and Recreation Supply Construction Between Mudanya Pier - Armistice Building

COMPLETED



Explanation

Walking paths, green areas, benches, cafes, kiosks, canopies, WC, parking lot and various floor coverings along the coastline with a width varying between 20 m and 30 m were constructed on a 950 m long and approximately 32.000 m² of coastal landscape. 500 m long and 4200 m² of area viewing terraces, Under the viewing terraces, 450 steel piles with a diameter of 50 cm and precast floors were made on top of them.

Orhangazi Coastal Recreation and Landscaping

COMPLETED

Explanation



Pedestrian paths, bicycle paths and jogging paths parallel to each other along the coastline of 2.7 km on an area of 84,000 m², and 2.7 km of natural walking paths, 3 Shower-Undressing Cabins, squares, parking lots, rain water, Infrastructure works related to sewerage, drinking water, green area irrigation system and landscaping arrangements including fitness areas, picnic areas and children's playgrounds on an area of 58.000 m² were made.

Gemlik Pier Square Landscaping

COMPLETED



Explanation

The 215 m long coastline was protected by fortification. 32.000 m³ of material was extracted from the sea by dredging and transported to the dumping area in the north of İmralı Island.

Approximately 125,000 tons of fortification was filled.

Square Arrangement Project Has Been Implemented.

Kestel Mandiras Stream Landscaping

COMPLETED

Explanation

It will be built in Kestel, KaleNeighbourhood, on 215 block, 1 parcel, and consists of a car parking lot, walking areas, jogging tracks, sports equipment and resting areas within an area of 28.098.88 m².



Dağ Yenice Picnic Area

SERVICEABLE



Explanation

The project, which is implemented on an area of 328 decares around the pond in Nilüfer Dağyenice, is carried out through the Build-Operate-Transfer model. It will include all the activities that can be done in nature, from country houses to adventure parks, from caravan camping areas to youth centre.

GökdereNational Garden

IN PROGRESS



Explanation

165.000 m² Open bazaar and National Garden will be built in Osmangazi Gökdere area. The tender for the project has been made and the first saplings have been planted, the construction continues.

Doğanbey National Garden

IN PROGRESS



Explanation

The tender for the Doğanbey National Garden Project was held in August 2020, and the productions are continuing.

It will be built on an area of 17.7 thousand square meters and will include social and cultural spaces and a 2 storey underground car park.

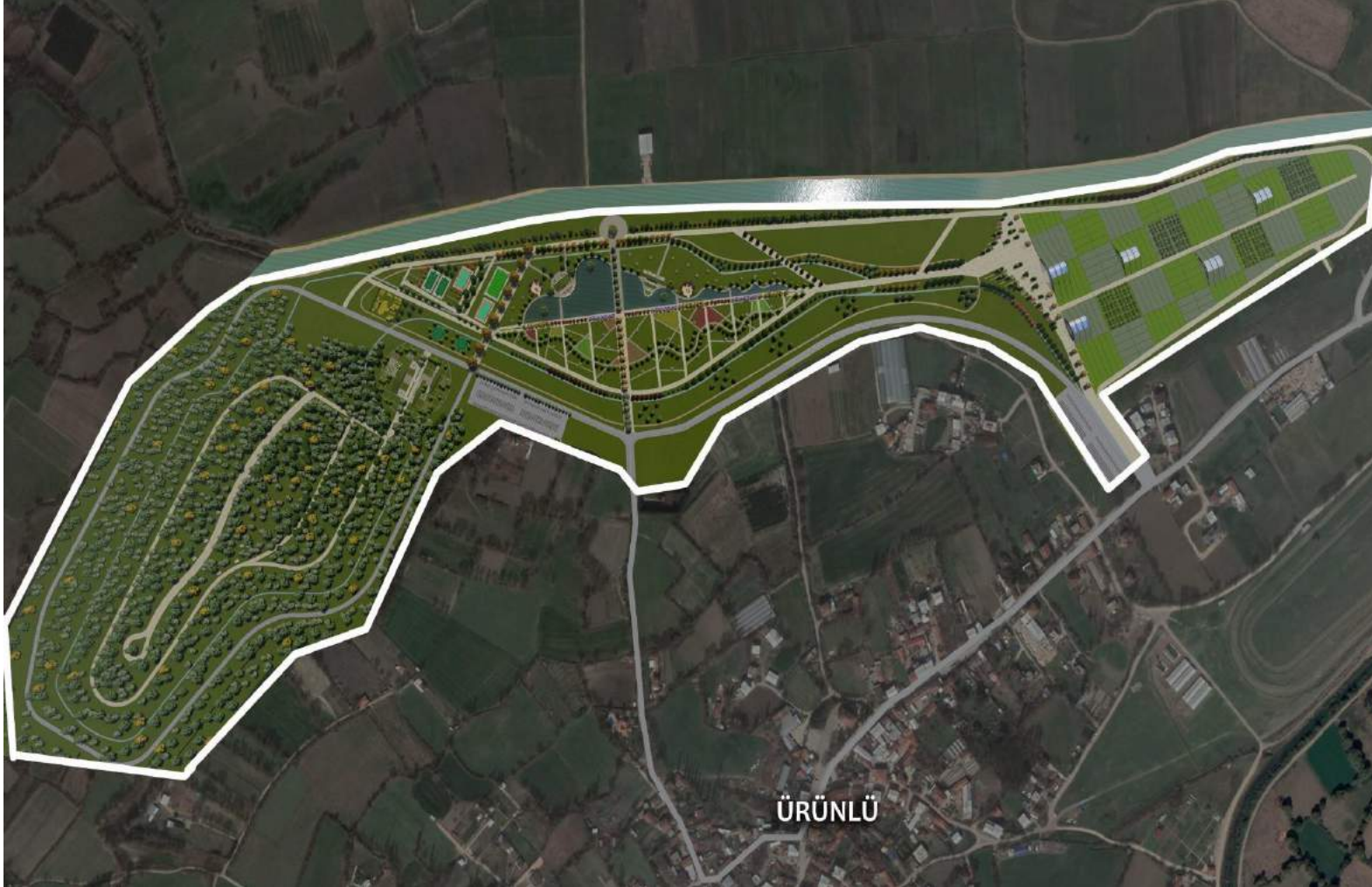
Ürünlü National Garden

BEING
PLANNED

Explanation

The Nation's Garden project, which is planned on a plot area of 511,418 m², on the 2728 block, 179 parcel, in the Ürünlü neighborhood, has a 1994 m² construction area.

Approximately 15 hectares of land located in the south of the project area has been allocated and the project work will continue when the zoning plan studies are completed.



Mudanya Yarımada Kentsel Tasarım ve Çevre Düzenlemesi

PLANLANAN



Açıklama

The first stage of the coastal arrangement of Mudanya district was completed in 2018. The second stage, 4.5 km, is planned to be built in two separate stages, and the peninsula is planned to be built as the first stage. In this context, approximately 40,000 m² of the existing coastal arrangement project will be completed after it is revised.

Within the scope of the Project, a Marina, 3 piers, 2 viewing terraces, walking and bicycle paths, 12 fish restaurants, toilets, prayer room, tea garden, 3 buffets, coastal protection structures, children's playgrounds, monuments, parking lots and landscaping will be made.

WASTE MANAGEMENT

PUBLIC



Waste Treatment in İnegöl Solid Waste Sanitary Landfill Tesis

IN PROGRESS



Explanation

Municipal wastes that are transferred to the İnegöl Solid sanitary Landfill in a mixed form will be physically pre-treated, and material recycling will be ensured and will be reintroduced to the economy. Fuel derived from waste will be produced from the part that cannot be recycled materially and has calorific value, and organic wastes will be subjected to biological treatment to provide energy recovery from the gas formed from the waste. It is done with the Build-Operate Model.

Construction of Orhaneli and Keles Solid Waste Transfer Station

IN PROGRESS

Explanation

The construction of the Solid Waste Transfer Station 'South Region Domestic Solid Waste Transfer Station' to be built in the Orhaneli district to solve the problem in the Orhaneli, Harmancık, Büyükorhan and Keles districts, whose hazardous waste storage areas have not yet been rehabilitated, has been completed. (Orhaneli Solid Waste Physical Implementation 100%) With the Solid Waste Transfer Station, 50 tons of solid waste per day from Orhaneli, Harmancık and Büyükorhan districts will be collected here and transported to the sanitary landfill. 20 tons of daily waste of Keles, which is geographically different from these three districts, will be resolved with the transfer ramp to be built



Eastern Waste Water Treatment Facility

IN PROGRESS

Explanation

Construction of 13 wastewater treatment plants, 3 drinking water treatment plants and 3 pumping stations were completed and put into operation. The production of 2 waste water and 3 drinking water treatment plants continues. 8 drinking water and 10 wastewater treatment plant projects are being prepared.



Collecting the Waste Within the Zero Waste Project

IN PROGRESS



Explanation

Work continues in the new service building and other operation buildings of our municipality within the scope of the Zero Waste Project. In 2020, a total of 38.000 tons of mixed packaging waste was collected in Bursa and brought into the economy. A Zero Waste Certificate was obtained by establishing the infrastructure within the scope of the Zero Waste Project for the New Service Building and Additional Service Building of the Metropolitan Municipality.



This is to confirm that the
Metropolitan Municipality of

Bursa

is hereby designated as a member of the
World Health Organization
European Healthy Cities Network
for Phase VII (2019-2025)

The Metropolitan Municipality of Bursa
is committed to achieving the goals and deliverables of Phase
VII of the Healthy Cities Network and to work in partnership
with WHO and other cities for a healthy and sustainable future.



Signed on behalf of
The Metropolitan
Municipality of Bursa
Mr. Alinur Aktaş
Mayor

Signed on behalf of
WHO Regional Office for Europe
Dr Hans Henri P. Kluge
Regional Director





Health is our business
if we want to be healthy!"

